

C6 PATCH PANEL UTP 50u

單位:mm

產品編號 : 18200

產品品名 : 3A-6PLEM-121BKZ

台製 3ANET 模組式 1U 10吋 12 Ports

C6 Patch Panel 網路跳線面板 跳接面板 黑色

Performance:

Meets C6 EIA/TIA 568B Standard.

Materials:

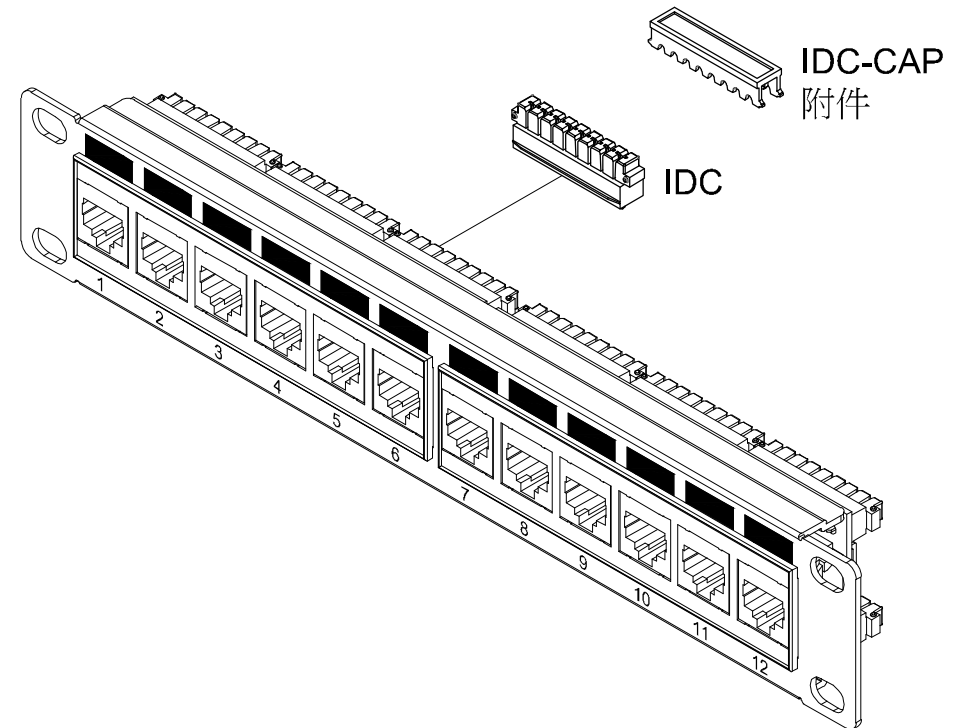
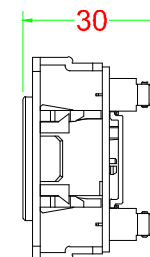
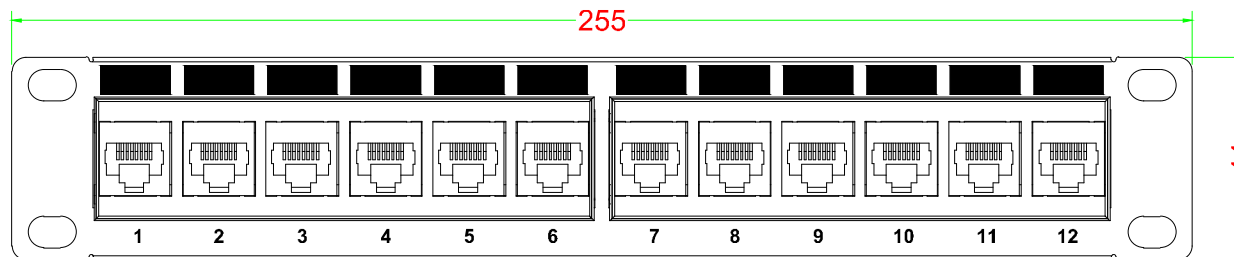
Front Plate : Fireproof ABS UL-94V0
Panel : Metal (SPCC)
Jack : 8P8C 50 micro inches gold plated
PCB : FR-4 / UL-94V0
IDC Cap : Fireproof ABS UL-94V0
IDC Body : Fireproof ABS UL-94V0
IDC Pin : Bronze & Tinned

IDC Description : For 22-26 AWG.

For 110 punch-down Tool

Electrical Specifications:

Insulation Resistance : 500M ohms (min.)
Contact Resistance : 20m ohms (max.)
Current Rating : 1.5 Amps .
DC Resistance : 0.1 ohms (max.)
Withstanding Voltage : 1000 VAC RMS @ 60Hz / 1 min.



Mechanical Specifications:

IDC Punch Down Cycle : Over 250 Cycles (min.)
Jack Insertion Cycle : Over 2000 Cycles (min.)

Operation Temperature : -40 °C ~ +70 °C